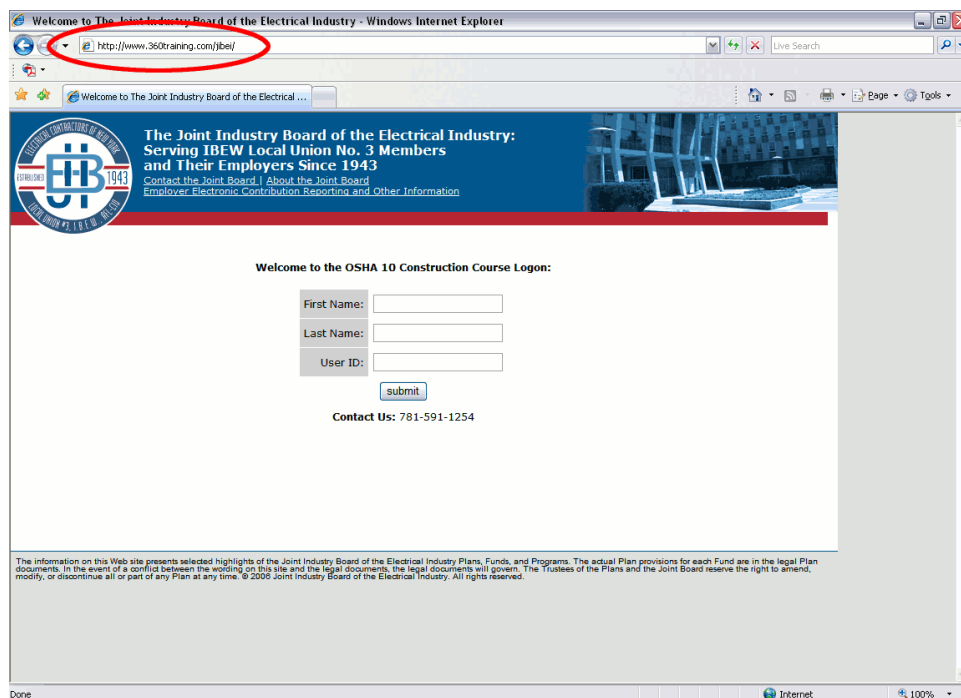


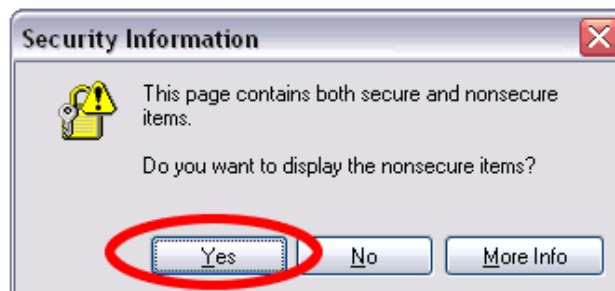
Accessing and Taking the OSHA 10 Online Course

The Joint Industry Board recently created an online training course for members who face a legal requirement to take an OSHA 10 hour construction safety class. Individuals required to take the course were notified by mail. **If you did not receive a letter in the mail regarding the online course, disregard this document.**

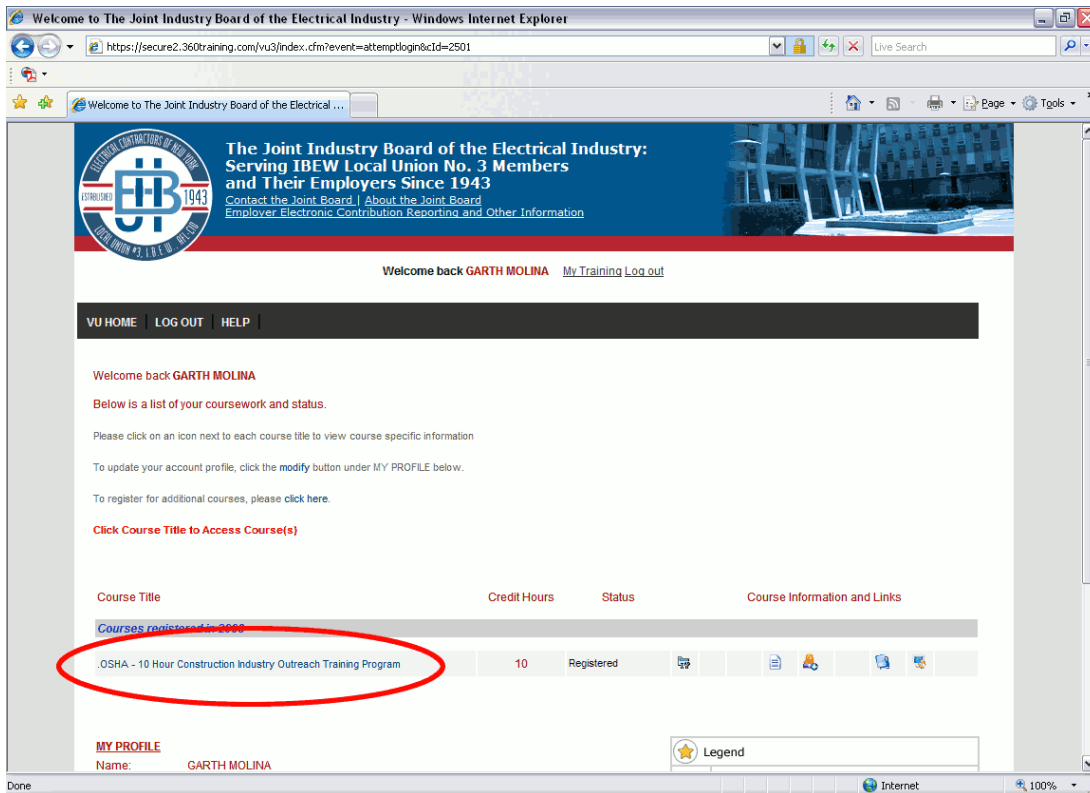
1. Please read through this document in its entirety before starting the course. If you click the links immediately, this window will close and you will not be able to see the remainder of the instructions. Generating a printed copy of this document so that you can refer to it after you have started the course is also advisable.
2. Go to the course website by clicking the following link or by typing <http://360training.com/jibej> in your browser's address bar. (See the circle in the illustration after step 2.)
3. Enter your first name (or initial), last name, and user id as it appears in the letter you received from the JIB and click the submit button.



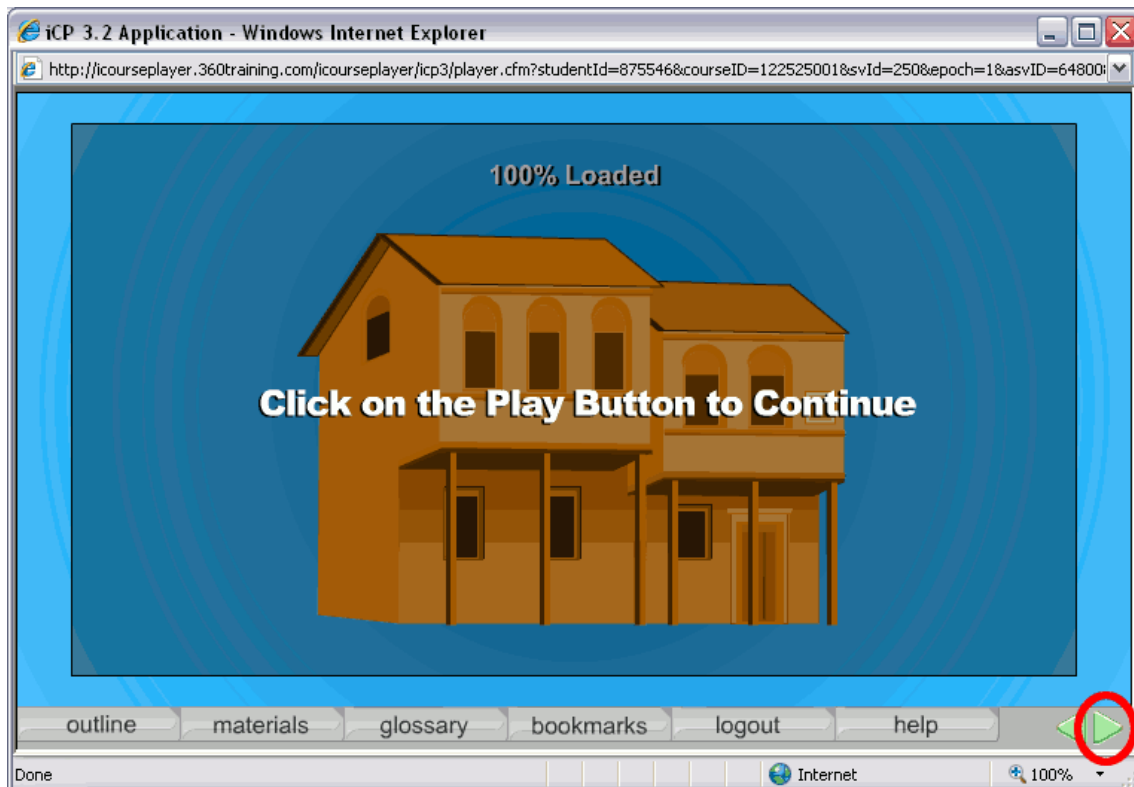
4. Click the yes button in the Security Information dialog box if prompted.



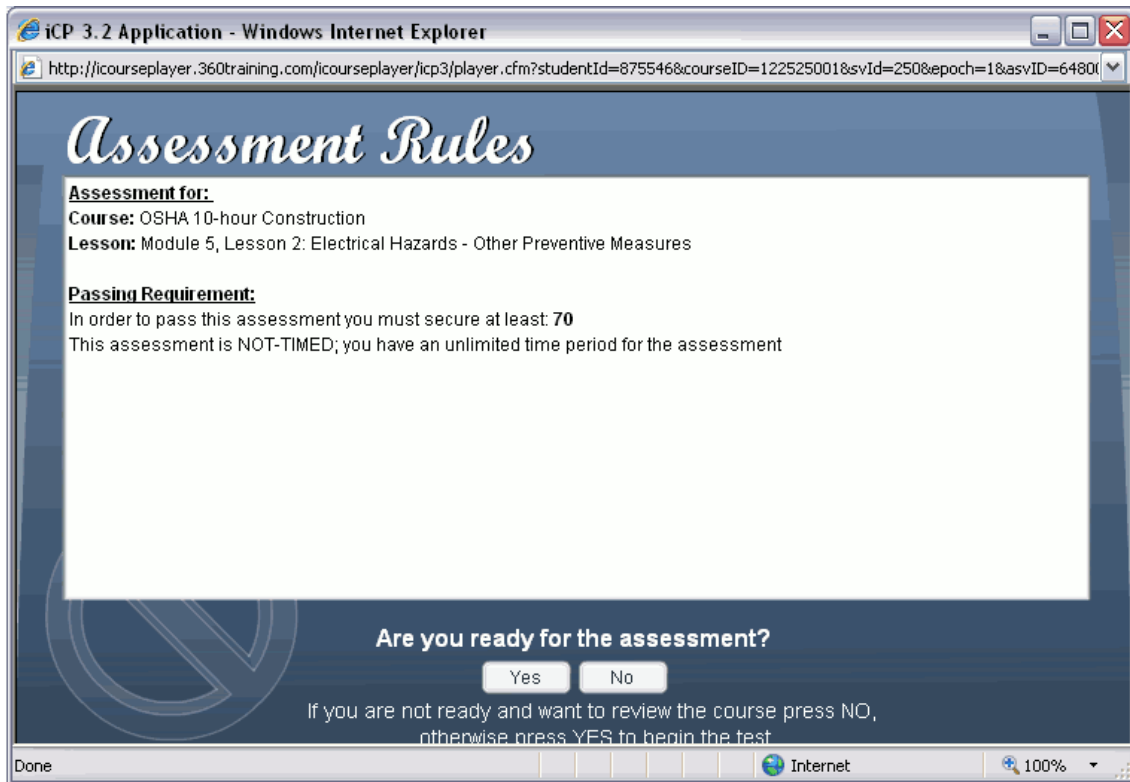
5. Under the *Courses registered in 2008*, click on the link for *OSHA-10 Construction Industry Outreach Training Program*.



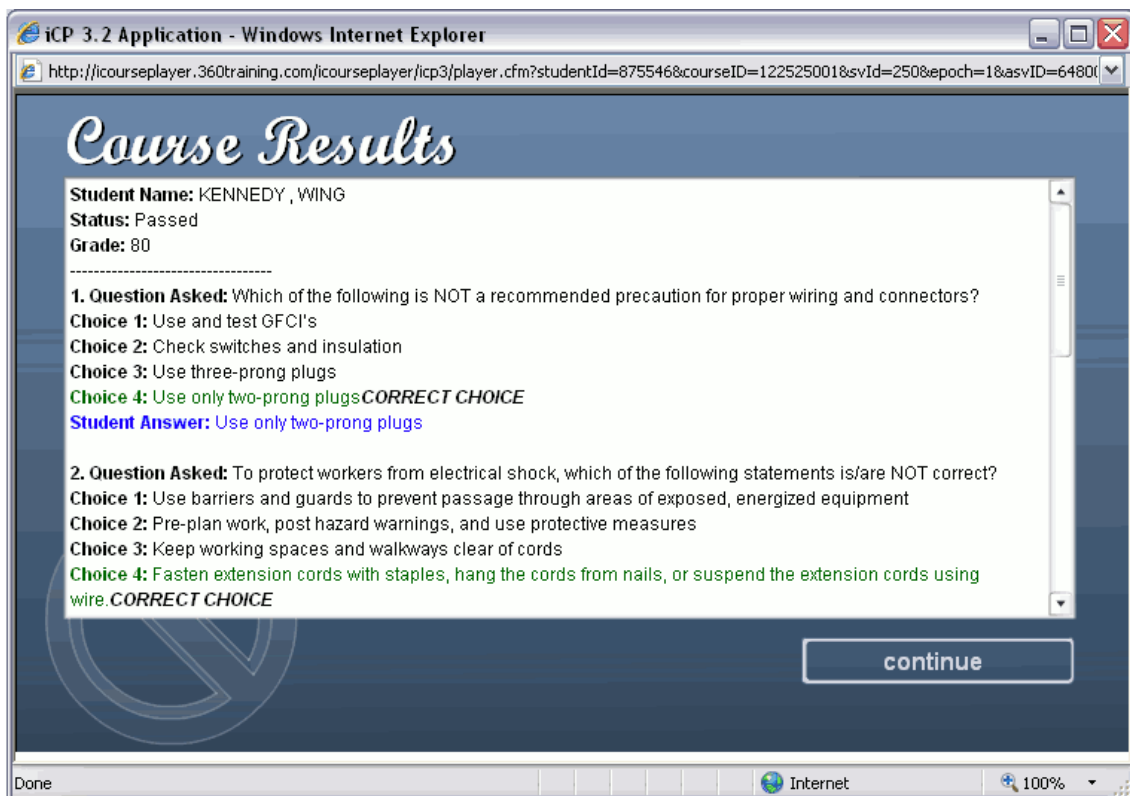
6. A flash player opens up. (If your computer does not have a flash player, consult the FAQ document for instructions on how to download one.) When the flash player loads, click the *play* button to start. It is on the bottom right hand corner.



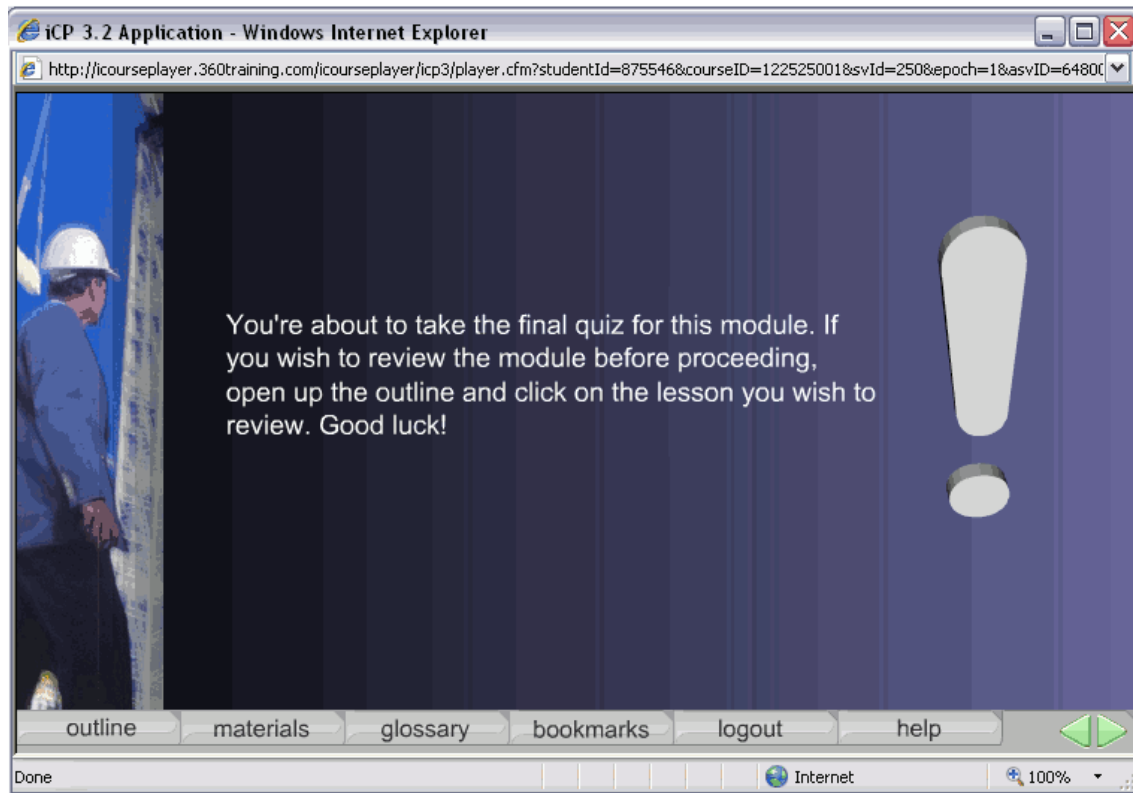
7. At the end of each chapter there is a quiz. If you are ready to take the quiz click on the *Yes* button. If you would like to review part or all of the chapter before taking the quiz, click the *No* button.



8. When the quiz is completed you are informed of your score, and the answers you provided are listed on the screen.



9. When you complete a full module you need to pass a ten question module quiz. This quiz covers everything in the chapter.



10. After successfully completing the final exam and filling out the required course evaluation, your coursework is complete. You are prompted to print a temporary certificate. The Joint Industry Board will mail your permanent OSHA card within 6-8 weeks to the address that you entered on the evaluation.

For additional assistance or information:

- Contact the Joint Industry Board at 718-591-2000 extension 1254 or osha10@jibe.com.
- Contact 360training.com at 888-318-3497 or support@360training.com
- Consult the list of frequently asked questions at <http://jibe.org/osha10/osha10faq.html>.